

K08745



**INTERNATIONAL
GEMOLOGICAL
INSTITUTE**



DIAMOND IDENTIFICATION REPORT

NUMBER	305810715 ANTWERP, February 26, 2018
DESCRIPTION	NATURAL DIAMOND
SHAPE AND CUT	ROUND BRILLIANT
CARAT WEIGHT	0.36 CARAT
COLOR GRADE	J
CLARITY GRADE	INTERNALLY FLAWLESS
CUT GRADE	EXCELLENT
POLISH	EXCELLENT
SYMMETRY	EXCELLENT
Measurements	4.50 - 4.52 x 2.86 mm
Table Size	55.5%
Crown Height - Angle	15.5% - 35.2°
Pavilion Depth - Angle	44% - 41.3°
Girdle Thickness	MEDIUM TO SLIGHTLY THICK (FACETED)
Culet	POINTED
Total Depth	63.5%
FLUORESCENCE	VERY SLIGHT
LASERSCRIBE	IGI 305810715

CLARITY SCALE

FLAWLESS/ INTERNALLY FLAWLESS	VERY VERY SLIGHTLY INCLUDED		VERY SLIGHTLY INCLUDED		SLIGHTLY INCLUDED		INCLUDED		
	VS ₁	VS ₂	VS ₁	VS ₂	SI ₁	SI ₂	I ₁	I ₂	I ₃

COLOR SCALE

COLORLESS			NEAR COLORLESS			SLIGHTLY TINTED			VERY LIGHT			LIGHT			FANCY COLOR							
D	E	F	G	H	I	J	K	L	M	N	O	P	Q	R		S	T	U	V	W	X	Y

O_m Security features included in this document are hologram, watermarked paper and additional features not listed, that, as a composite, exceed industry security standards.



See terms and conditions on reverse

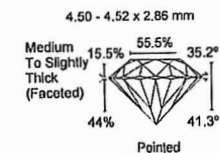
© IGI 2000 edition 2017

All rights reserved. No part of this report may be reproduced or transmitted in any form or by any means, without permission in writing from International Gemological Institute



305810715
ANTWERP, February 26, 2018

NATURAL DIAMOND
ROUND BRILLIANT
WEIGHT 0.36 CARAT
COLOR J
CLARITY INTERNALLY
FLAWLESS
CUT EXCELLENT
POLISH EXCELLENT
SYM EXCELLENT
FLUO VERY SLIGHT



Note: Profile not to actual proportions



**INTERNATIONAL
GEMOLOGICAL
INSTITUTE**